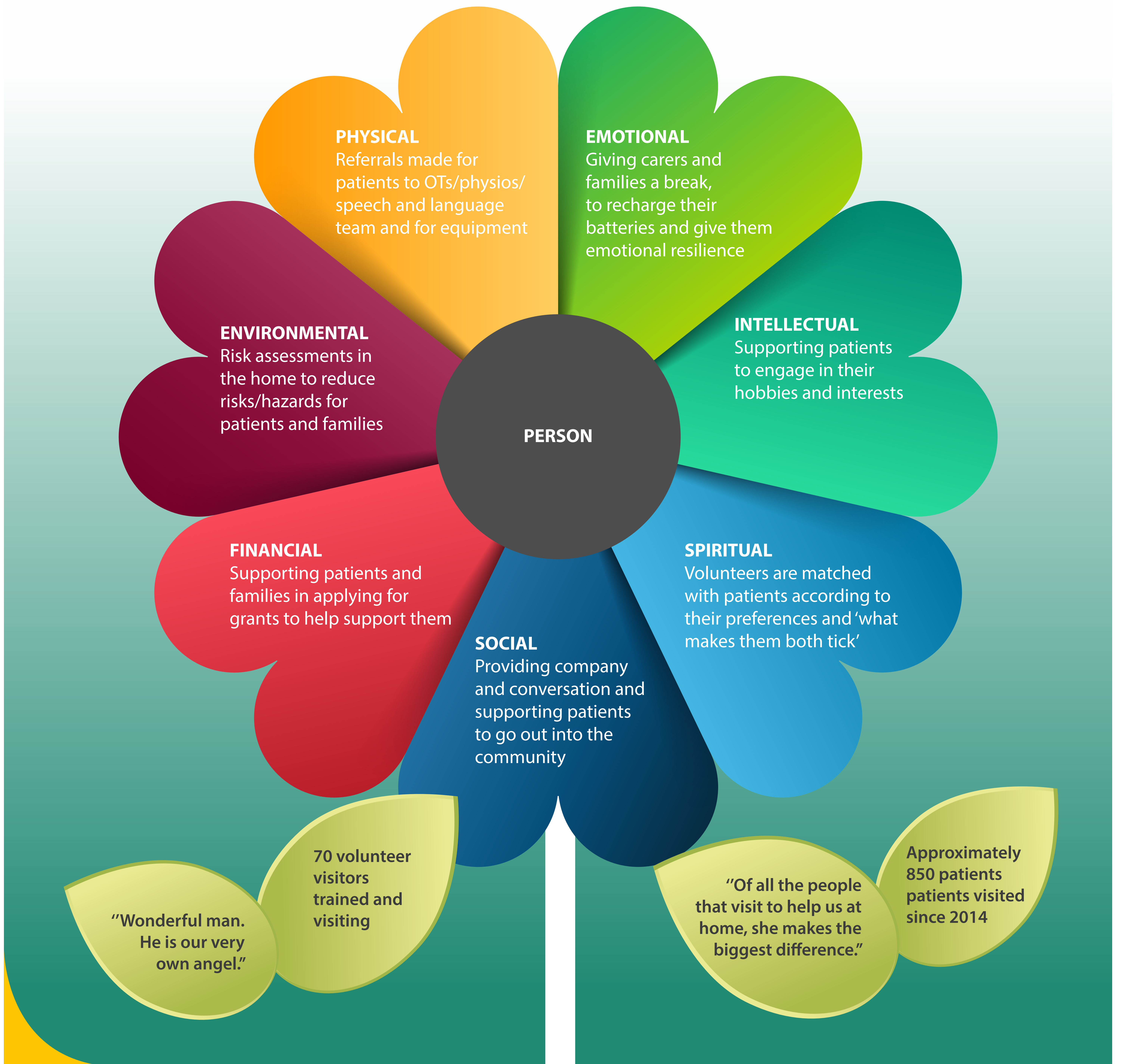


LOROS VOLUNTEER HOME VISITING SERVICE... MORE THAN JUST A SITTING SERVICE

Previously known as the Family Support Service, staff were employed to visit patients in their own homes, to provide companionship, reduce social isolation and offer respite to carers and families. The service was reviewed in 2013; and evaluation showed that it was making a positive impact on patient and carers lives. In 2014 it was remodelled as the Home Visiting Service with volunteers providing support to patients and families.



Danielle Smeeton, Community Outreach Lead
daniellesmeeton@loros.co.uk

loros.co.uk

Registered Charity No: 506120

LOROS

Hospice Care for Leicester, Leicestershire & Rutland

Being there for *you*
and *your family*